



Artificial damage and repair with charge

Below examples are products found to be damaged through misuse, abuse or negligence is not eligible for our warranty replacement. If product with such issue still needs to be repaired or replaced with charge, Please contact PNY sales Dept.

If there is trace can be observed with the following situations, PNY shall not accept the RMA application.

Flash drive & Flash card

1. The housing had been opened or taken apart
2. The housing is bended or broken or cracked or deformed
3. The PCB or SIP is cracked, bended.
4. The gold pins were burned

DRAM Module

1. The component had been taken apart
2. The component fall off
3. The PCB is bended or scratched or broken or cracked or deformed
4. The gold pins were burned

VGA Card

1. The component fall off
2. The PCB is scratched or bended or deformed
3. The gold pins were burned

PNY Product

SD CARD



SD card housing damage



SD card IC damage



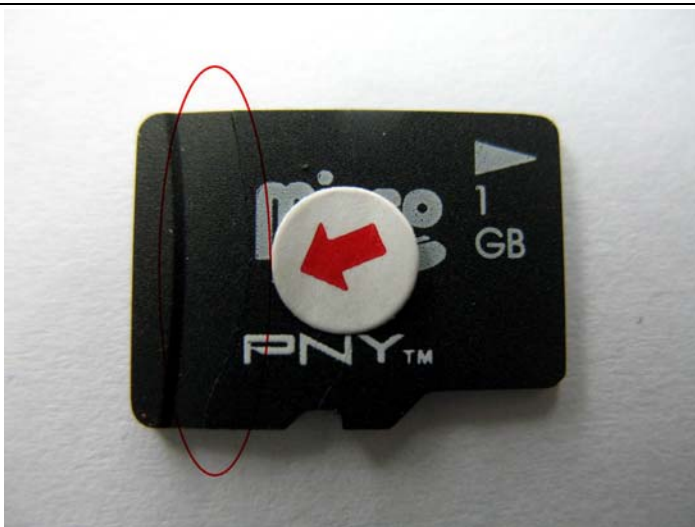
SD card switch lost



Mini SD card housing damage



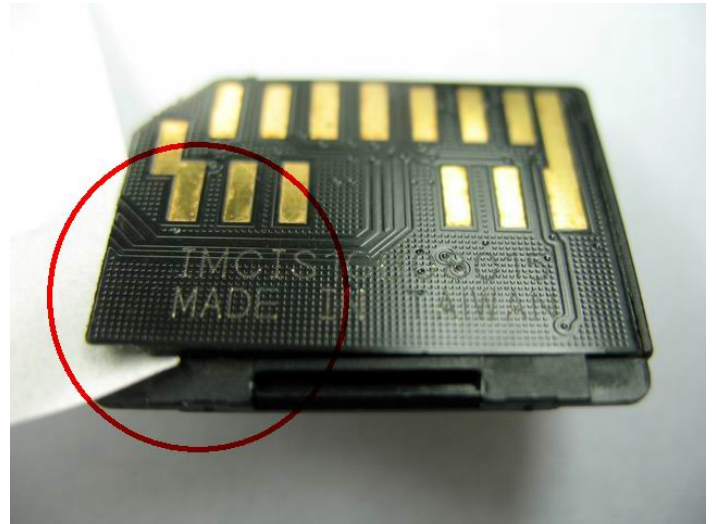
Mini SD card housing damage



T-flash (1)



T-flash (2)



MMC card housing damage

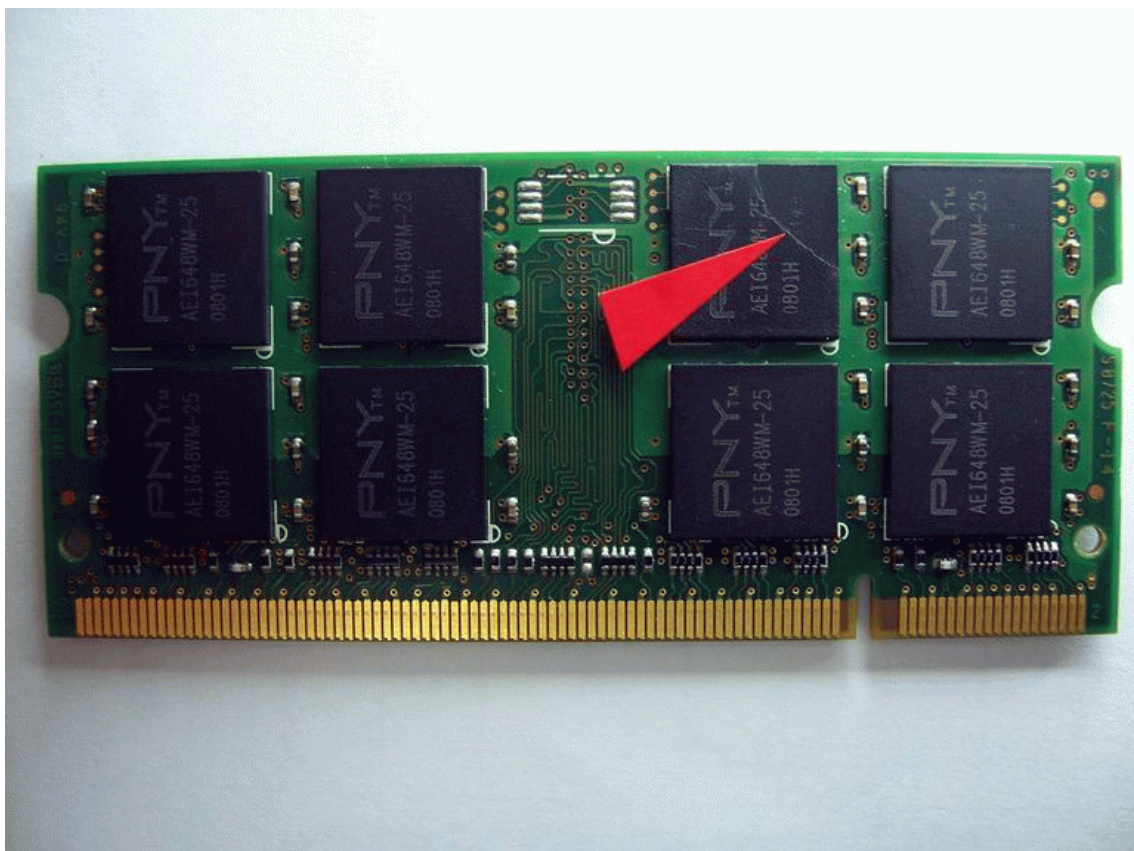


The PNY label re-labeled

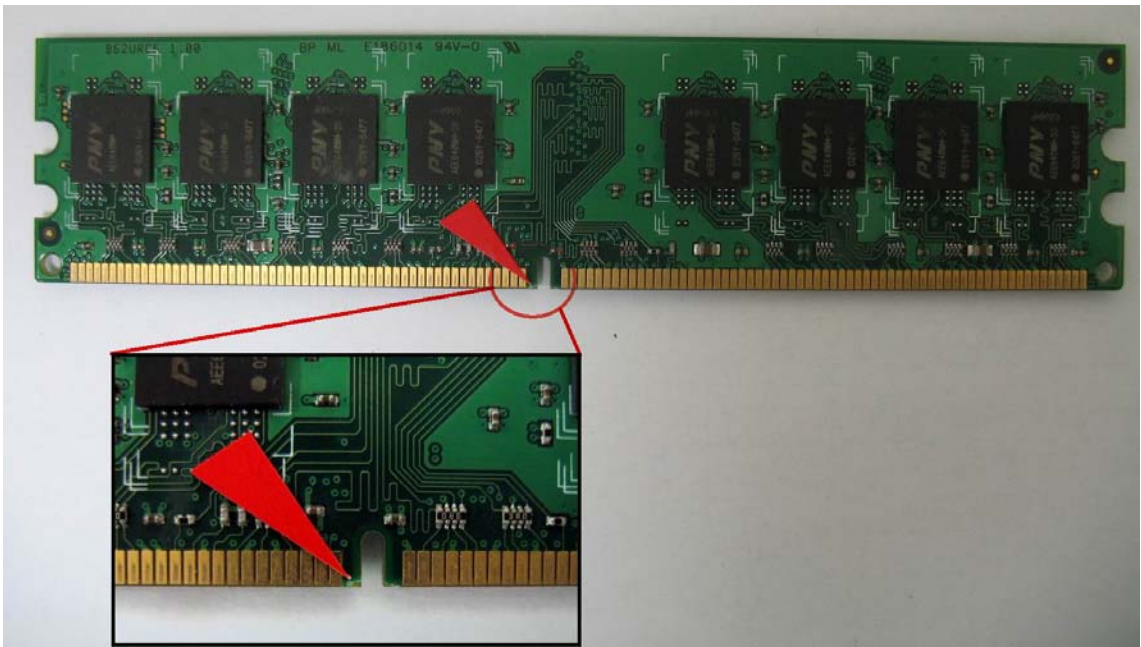
DRAM Module



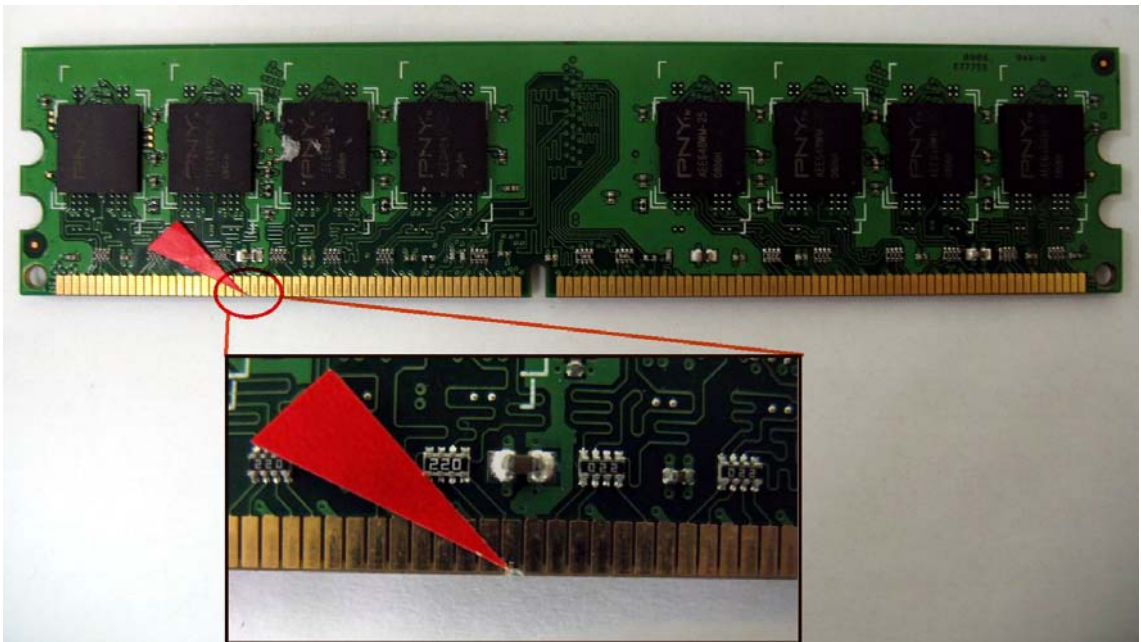
EEPROM lost



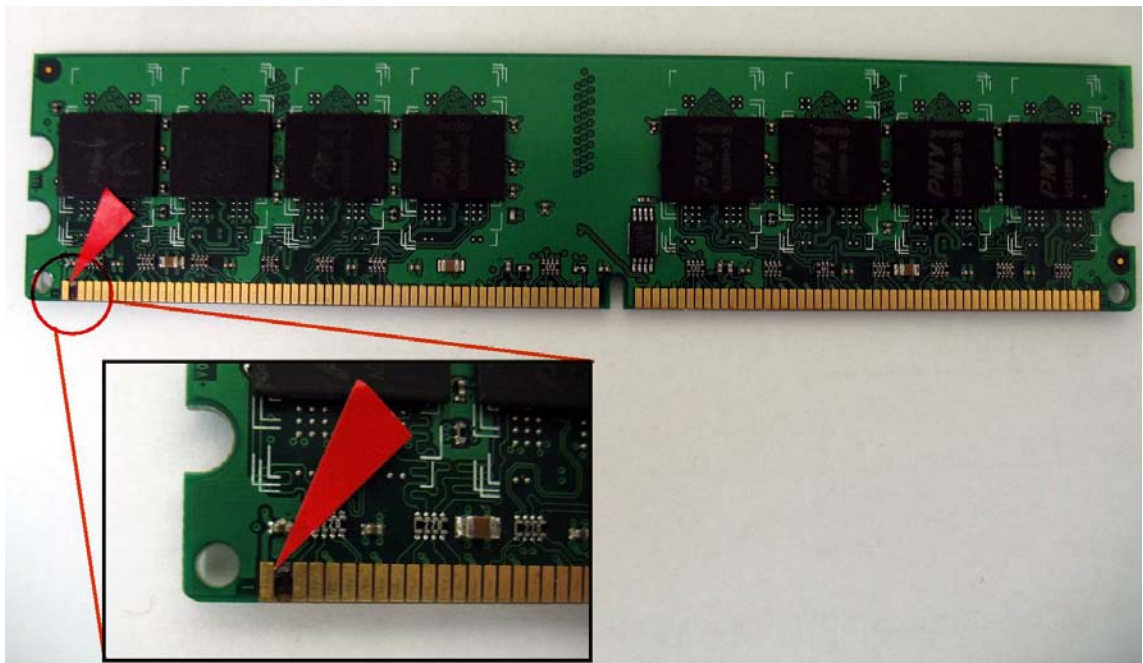
IC damage



PCB damage (1)



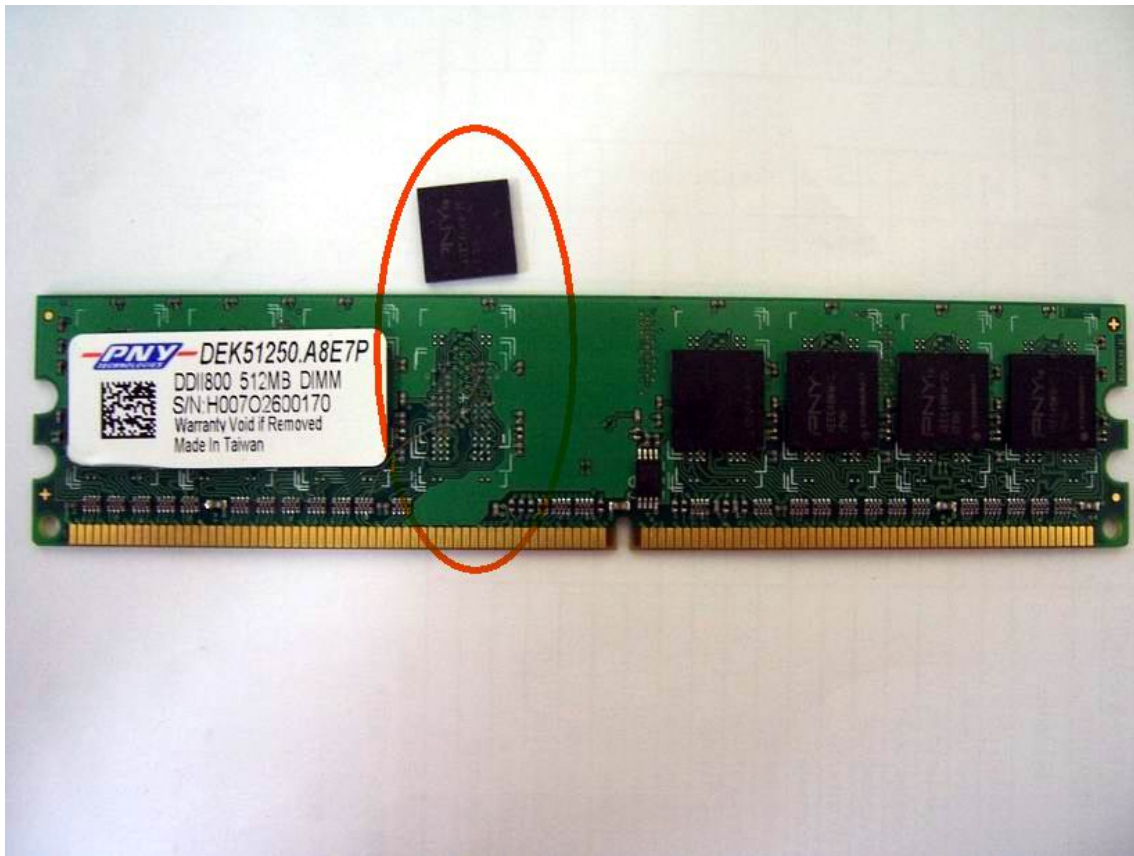
PCB damage (2)



PCB damage (3)



PCB damage (4)



IC fall off

USB drive



Abnormal external voltage causes micro attaché
burned



Out door (1)



MINI attaché housing (1)



MINI attaché housing (2)



UDP damage(1)



UDP damage(2)



UDP damage(3)

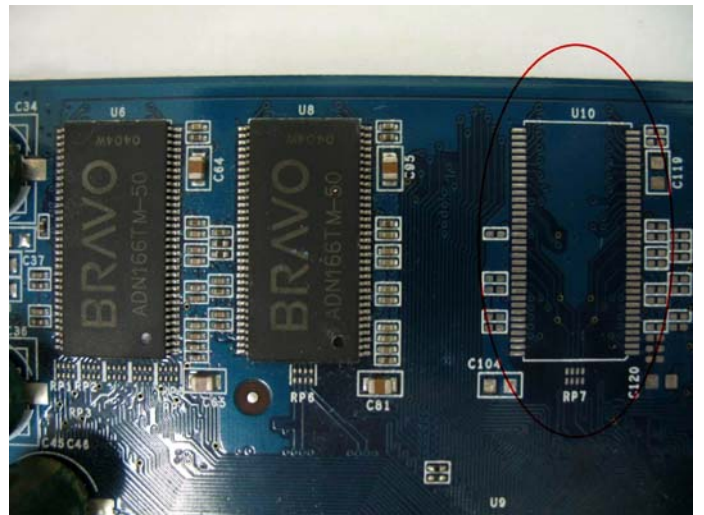


PCB damage(1)

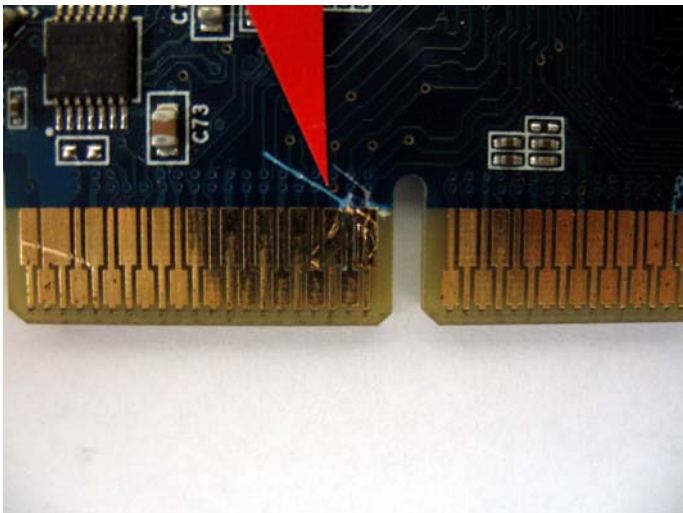
VGA CARD



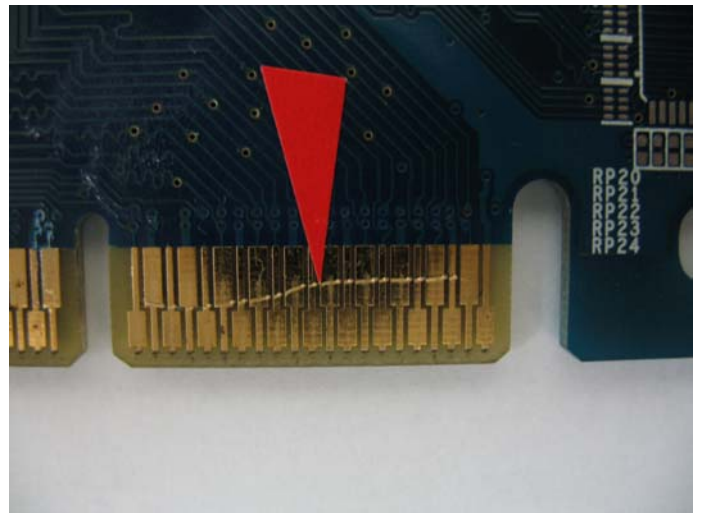
VGA CARD



VGA-IC fall off



VGA-PCB damaged(1)



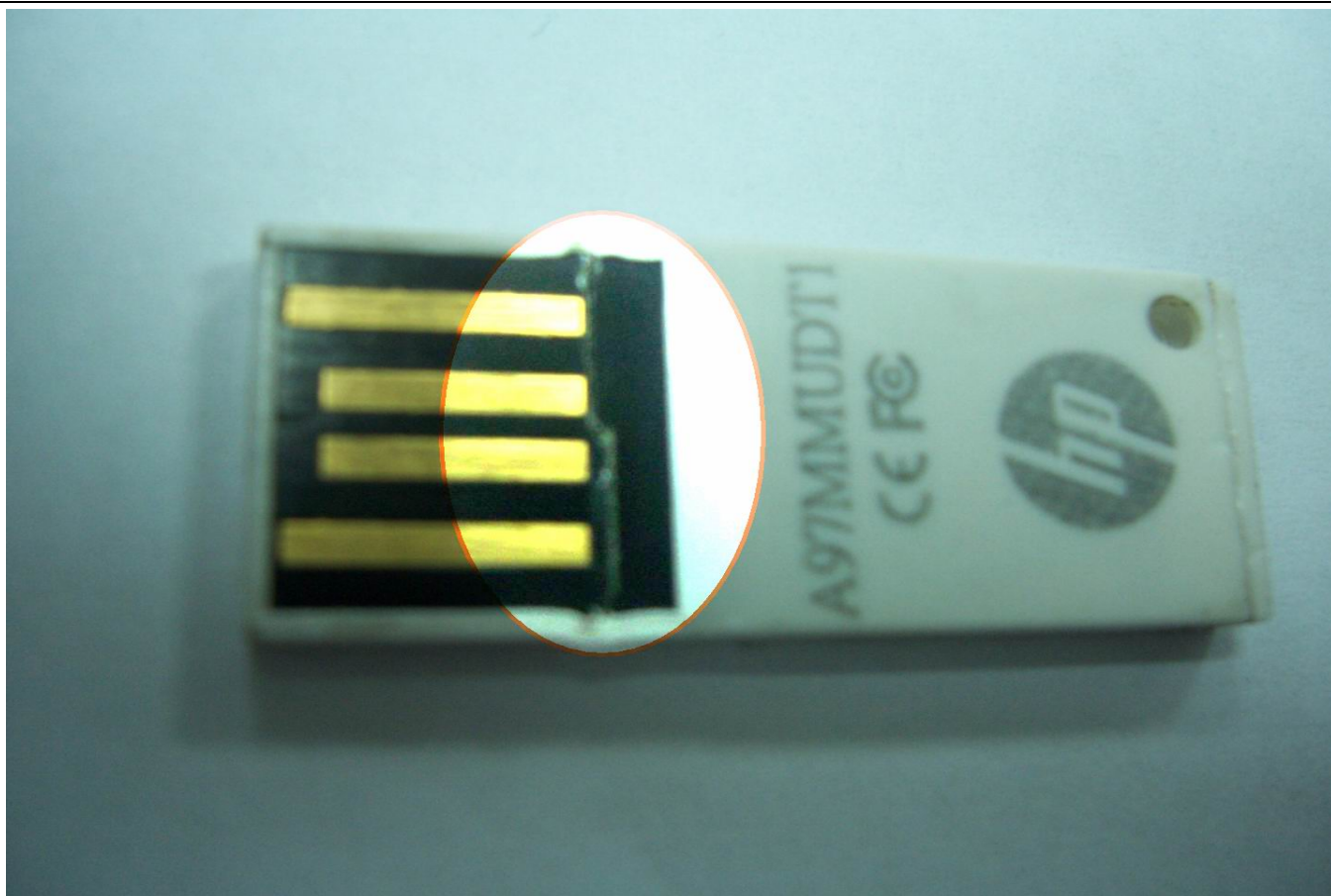
VGA-PCB damaged(2)

HP Product.

SD card



SD housing damage(5)



HP UDP damage(1)



HP damage(2)



HP UDP damage(3)



HP UDP damage(4)



HP UDP damage(6)



HP damage (7)

